

Operation Resolute Lift

By Don Rudi



Manual

Operation „Resolute Lift“

Setting

Date: 24 February 2009

Location: Eastern Afghanistan

Weather: Broken clouds, winds 18 knots

Time: 0700 Local (0230 Zulu)

The security situation in eastern Afghanistan has deteriorated significantly over the past 48 hours. Insurgent forces have intensified their operations along key supply routes, targeting NATO convoys with IEDs and ambush tactics.

FOB Thunder, located approximately 17 nautical miles southwest of Jalalabad, has been cut off from its resupply lines after an ambushed convoy was completely destroyed. The base is now critically low on essential supplies, including ammunition, medical equipment, and rations. Without immediate replenishment, operational effectiveness will be severely compromised.

With ground routes compromised, air resupply is the only viable option. Your task is to deliver five cargo pallets (approximately 10,000 lbs) to FOB Thunder using a CH-47F Chinook departing from Kabul Airfield.

In addition to the supply crisis, six wounded personnel at FOB Thunder require urgent medical evacuation to Kabul. Given the extent of their injuries, time is of the essence.

Reaper 2-1, an AH-64D Apache, will provide armed escort for the duration of the mission. While there are no confirmed enemy positions along the planned flight route, insurgent activity in the region is unpredictable. Expect potential engagement near the FOB and along the return leg.

Mission success is contingent on delivering the cargo intact and extracting the wounded safely. Be prepared for rapid ingress, precise execution, and a fast turnaround.

Task

Callsign: Hauler 1-1

Aircraft: CH-47F Chinook

Base of Operations: Kabul Airfield

Escort: Reaper 2-1 (AH-64D Apache)

Mission Objectives

1. Resupply FOB Thunder

- Load five cargo pallets (10,000 lbs total) at Kabul Airfield using the Ground Crew – Rearm and Refuel window.
- Depart Kabul Airfield following the pre-programmed route.
- Maintain formation discipline: Ensure Reaper 2-1 remains 1–2 miles ahead at all times. If the escort falls behind, hold position before proceeding to the next waypoint.
- Follow the valleys between waypoints to minimize exposure.
- After Waypoint 2, remain below 6,000 feet MSL, as airspace above is reserved for fixed-wing operations.
- Approach FOB Thunder from the south to avoid blowing debris onto the camp's tents.
- LZ will be marked with green smoke. Land precisely to avoid obstacles.
- Unload the pallets at the FOB and await further instructions from your crew chief.

2. Medical Evacuation (MEDEVAC)

- Once the wounded are loaded, prepare for immediate departure.
- Fly the reverse route back to Kabul.
- Shortcuts are only permitted between WP6 and WP3. Otherwise, follow the designated flight path.

Communication Frequencies

- **Kabul Ground:** 125.4 MHz
- **Kabul Tower:** 120.6 MHz
- **Tactical Net (Reaper & FOB Thunder):** 264.0 MHz (Preset on **Channel 2** in UHF Radio)
- **VHF frequencies must be set manually.**
- **Reaper has TACAN channel 64X** (see appendix A)
- **Do NOT use ingame ATC!**

Additional Notes

- **Adjust master volume and VHF radio volume** to ensure incoming transmissions are audible.
- **Cargo loading/unloading is handled via the Ground Crew – Rearm and Refuel window.** Note: the **ramp** must be **fully** down.
- To make your **initial call to ATC** to request startup:
 - set ARC186 frequency to **125.400**
 - set ARC186 left dial to **MAN**
 - set ARC198 right dial to **TR**
 - Battery switch to on
- Stay **behind** your Apache **Escort** about **1 - 2 miles**, do not overtake him!
- Mission has a **time limit of 90 minutes** to bring the wounded to Kabul. There is enough buffer, so **no need to overtake the Apache**.

Relevant Waypoints

WP1	N 34°36.063' E 69°17.952'	4.4nm
WP2	N 34°34.302' E 69°23.402'	4.8nm
WP3	N 34°33.819' E 69°34.095'	8.9nm
WP4	N 34°38.307' E 69°41.774'	7.8nm
WP5	N 34°35.470' E 69°46.042'	4.5nm
WP6	N 34°29.942' E 69°50.101'	6.3nm
WP7	N 34°31.162' E 69°58.862'	7.5nm
WP8	N 34°28.472' E 70°06.882'	7.2nm
WP9	N 34°23.106' E 70°09.022'	5.7nm
WP10 FOB	N 34°15.639' E 70°11.847'	7.8nm

On your return to Kabul you will use the reverse route up to WP2, where you will receive radar vectors by ATC.

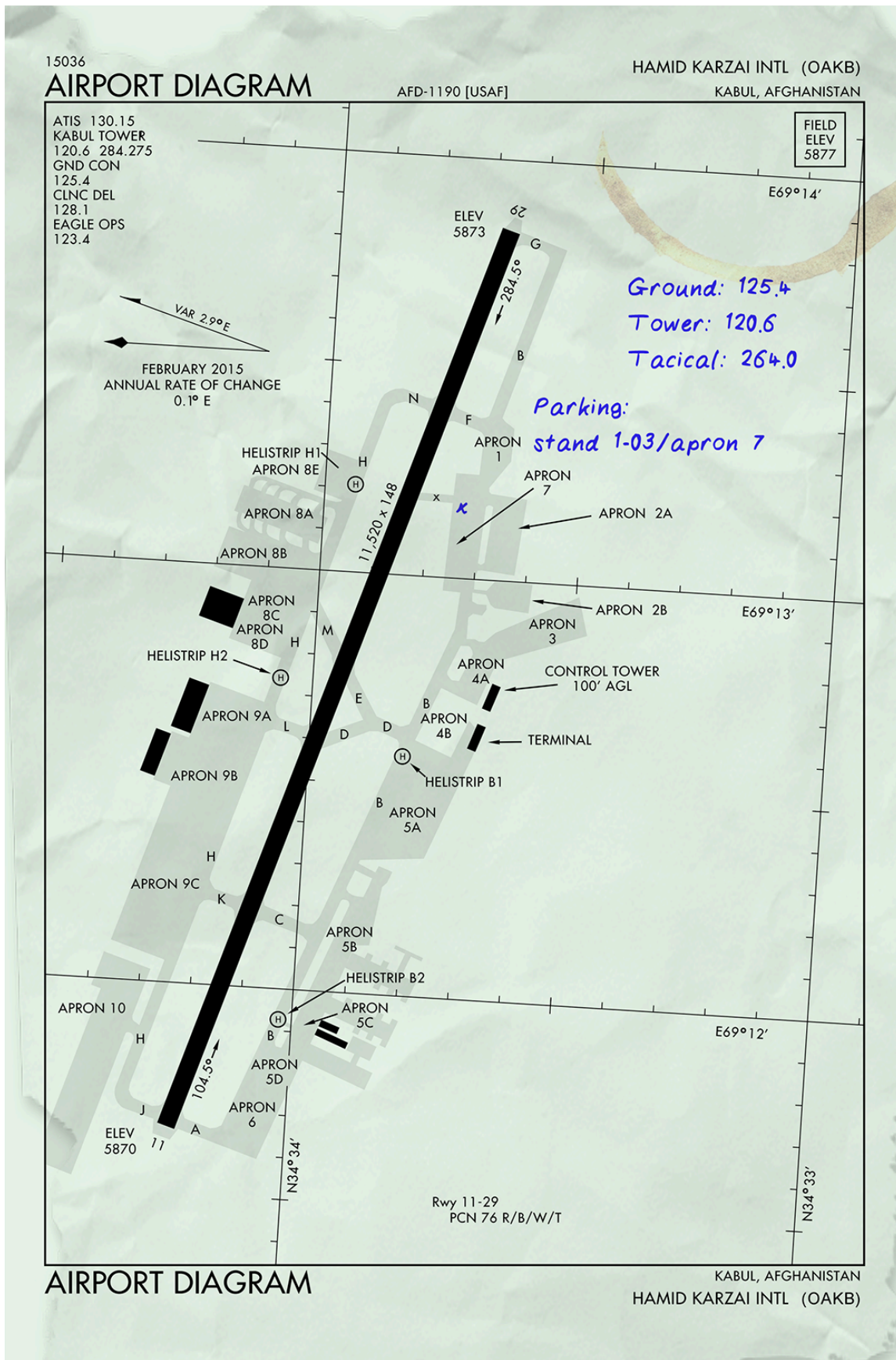
Known Threats

There is insurgent activity reported, ranging from small arms to mortars and possibly MANPADS. Reaper will take of these threats.

Mission card

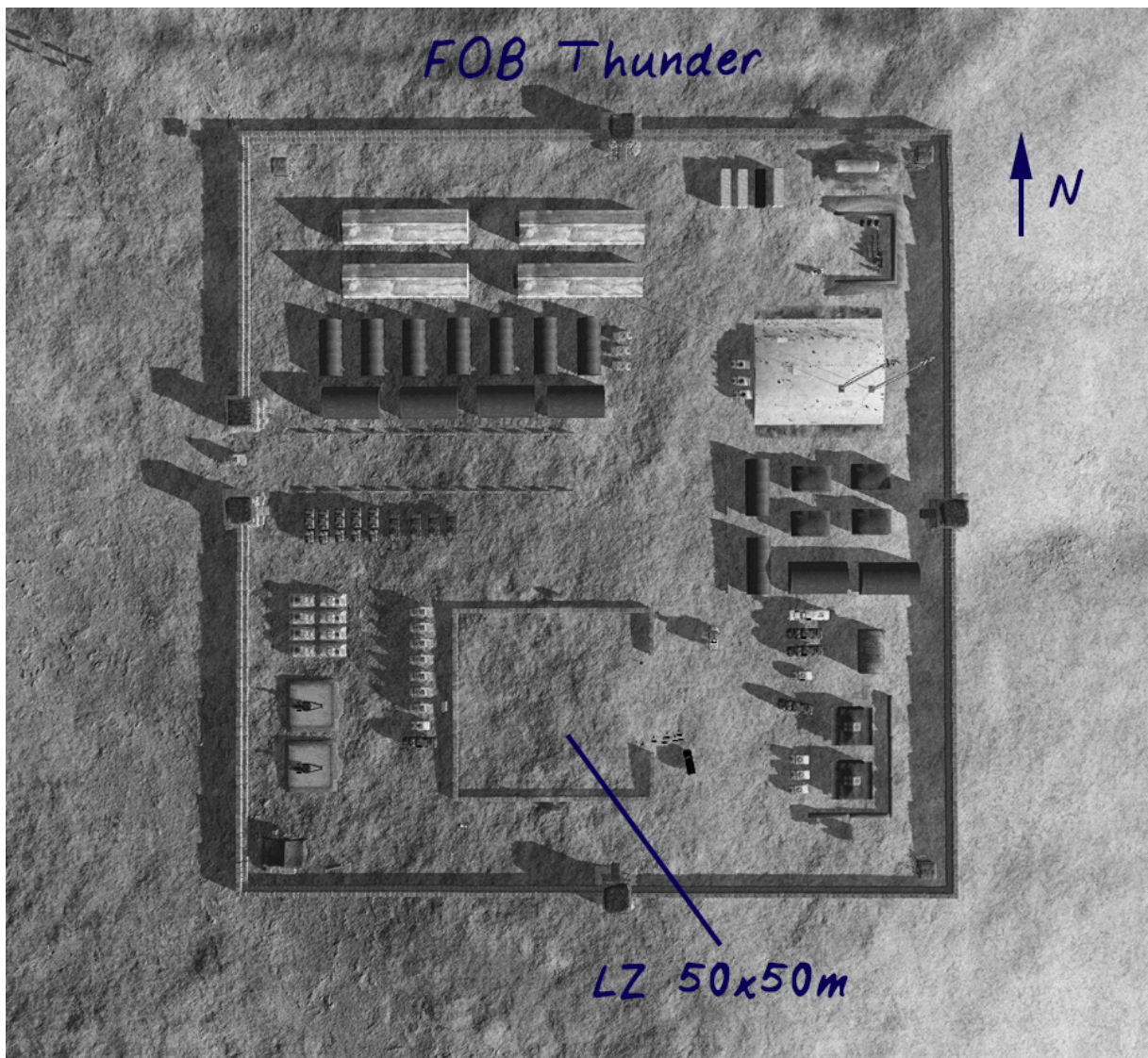
Confidential										02/24	
Mission data card											
	1219107	Callsign	Hauler	Package	1910	Mission	FOB Thunder resupply				
Airbase		Airbase		TCN	UHF	VHF	Elev	RWY	ILS		
	DEP	Kabul		65X	---	120.600	5877	29	---		
	ARR	Kabul		65X	---	120.600	5877	29	---		
	ALTIN	Bagram		---	---	131.600	4868	21R	---		
Flight	Pos	Name		IDM	TCN	TO	LND	Notes:			
	1 Lead	Gurkenberg		1-1				Crew			
	2 Wing							Gurkenberg, Rigsby,			
	3 Element							van Pelt, Cho, Lisbon			
	4 Wing										
Package	Callsign Pack		AC Type	UHF	IDM	TCN	Task				
	Reaper		1x AH-64D	264.000	2-1	64X	Escort				
TO/Loadout	Config					Fuel		Wx notes:			
	A_A	---		Gross Wgt	40,196	TO/ Fuel	3,400	Wind 280/18 Temp 4C			
	A-G	2x M240		Drag ind	---	Set Fuel	---				
	ECM/Pod	---		ALOW	---	JOKER	----				
	Tanks	---		MSL	---	BINGO	1,200				
Task	Primary	Resupply FOB Thunder				Weapon	Type	---			
	DMPI	---					Sensor	---			
	Pos	N 34 15.639 E 70 11.847, elev 4028'					Release	---			
	Wind	278/16	Alti	29.88			Code	---			
	Secondary						Type				
	DMPI						Sensor				
	Pos						Release				
	Wind		Alti				Code				
Support		AC Type		TCN	UHF	LOC	Notes:				
	Tanker 1										
	Tanker 2										
	FAC										
Flightplan	STPT	Action	TOS	HDG	Dist	GS	Alt	Formation			
	1	Takeoff	0700								
	2	WP1	0703	055	4.4	100	7000				
	3	WP2	0705	110	4.8	110	8000				
	4	WP3	0710	090	8.9	110	6000				
	5	WP4	0716	050	7.8	110	5000				
	6	WP5	0718	125	4.5	110	5000				
	7	WP6	0722	145	6.3	110	5000				
	8	WP7	0726	075	7.5	110	5000				
	9	WP8	0730	108	7.2	110	5000				
	10	WP9	0733	157	5.7	110	5000				
	11	FOB	0737	160	7.8	100	4000				
Mission notes:											
<p>Pick up 5 palletes of cargo at Kabul and deliver them to FOB Thunder.</p> <p>At FOB Thunder unload cargo and pick up 6 wounded for urgent medical treatment.</p> <p>Return to Kabul - reverse route!</p> <p>On return, after WP2 expect direct to KBL VOR (112.600) 250°</p> <p>Increased insurgent activity, possible manpads threat in target area.</p> <p>Doorgunners ROE return fire.</p>											

Aerodrome layout



Your parking position is 1-03 on Apron 7 and you will taxi to and from runway 29 via Taxiway B and F.

FOB Thunder



Ideally approach the LZ from the south to avoid flying over the tents. Violations will result in a loss of mission score.

Labels

Normally, I am not a fan of forcing no-labels on the player and leave the choice to display or disable them to the user. This time the labels are reduced, simply as they are not necessary and confuse more than they might help.

File

The zip file contains:

CG_Operation_Resolute_Lift_1_0.miz

Crew Briefing.mp3 and PDF - you can listen to this (and read along) before flying the first time, to get into the mood. Special thanks to Nathan!

Note: as the triggers are connected to unit and group names, as well as weapon types, please do not rename any units or groups or change the loadout, as this will cause the mission not to work as designed.

Version history

V 1.0 initial release

V 1.0.1 corrected wrong TACAN information on mission card in the manual

Imprint

Version 1.0.1 / March 2025

By Don Rudi

Enjoy!

Appendix A - TACAN

REAPER21 has his **TACAN** set to **64X**, you can use this to keep an eye on your distance (ideal are between 1 and 1.5 nautical miles).

To set up your TACAN perform the following steps:



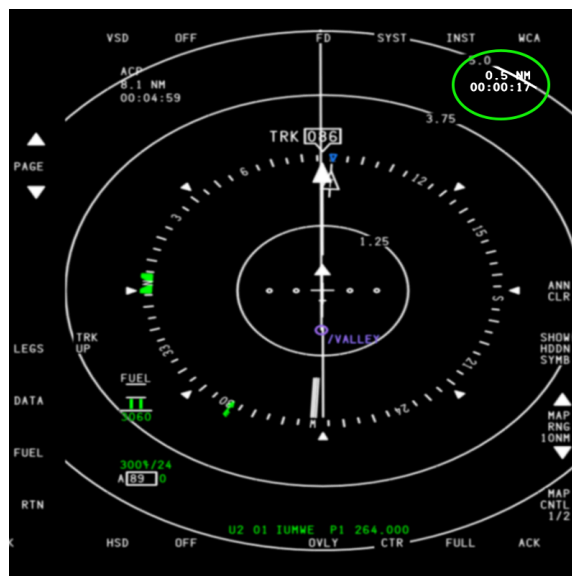
On your CDU press CNI until the NAV Radios page opens. Then enter 64X into the scratchpad and press the 2nd from top right pushbutton enter the new TCN channel.



Now enter the FD page and press the PB next to TACAN.



On the TCN Control page, press the PB next to mode, until AATR (air to air, transmit and receive) appears.



On your HSD select OVLY 1 and activate TCN BRG (R9). The range to the TCN source will now be displayed in the top right corner of the HSD.
Note: the bearing does not work.